

The Exchange, Pole Street, Preston

The development comprised of demolition of existing building, design, and construction of 200nr 1, 2 & 3 bedroom apartments, ground floor commercial units, circulation spaces, gym, residents lounge and external works at Pole Street, Preston

Client	The Heaton Group
Completion Date	December 2023
Work Undertaken	Enabling Works, Drainage, External Façade, Hard & Soft Landscaping
Contract Value	£3,200,000.00



Scope of works

Enabling Works

The Curley Group were successfully appointed to complete the 12-week enabling package at The Exchange. A full site strip and reduced level dig was undertaken and approximately 20,000m³ of spoil was disposed of from site. We encountered large obstructions in the ground which were excavated and recycled as crushed material for use in the piling mat.



Groundworks & Civils

Following successful completion of the enabling package The Curley Group tendered and were awarded the Groundworks and Civils package at The Exchange. A brief description of the operations conducted are; -

- Piling attendances working in conjunction with piling contractor
- Installation of base for tower crane
- Excavation of piles and pile cropping
- Excavation for ground beams and casting of foundations and pile caps
- Excavation and installation of all drainage and attenuation tank inclusive of connection to main drain outside of site boundary
- Traffic management to allow drainage connection.
- Installation of all sub structure masonry





CURLEY GROUP



The Curley Group Ltd. Co. Reg. 13143071





CURLEY GROUP

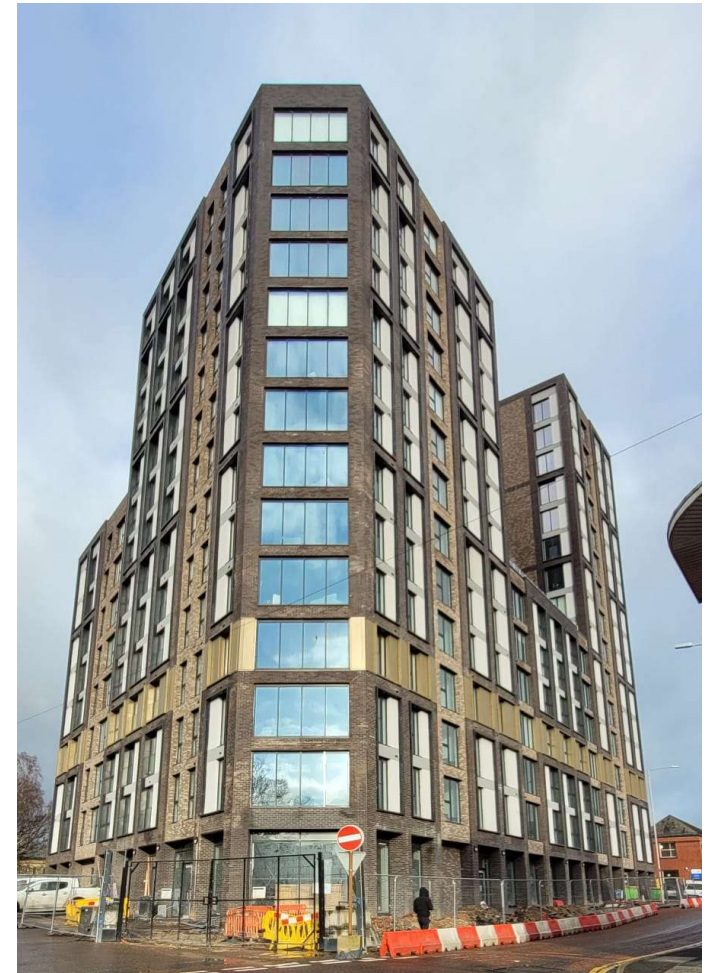


The Curley Group Ltd. Co. Reg. 13143071



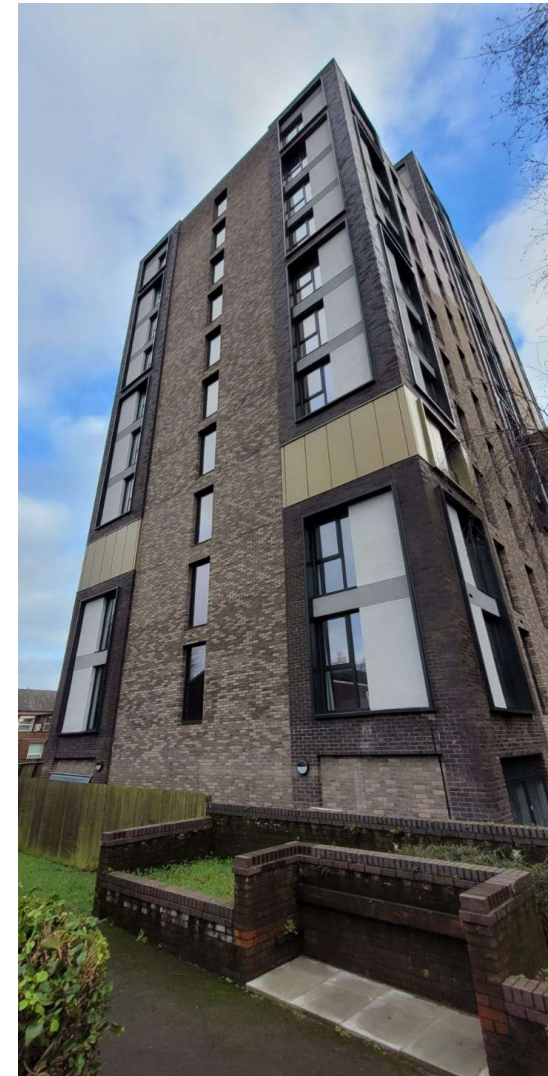
External Façade

After completing the enabling and groundworks packages The Curley Group were awarded the External Façade Package at The Exchange. The Exchange is the currently the tallest building in Preston spanning 13 floors and is a complex design as can be seen in the photographs below. The Curley Group were responsible for the supply and installation of the full brickwork façade including the installation of all external wall blockwork, insulation, brickwork façade, cavity trays, fire barriers, cavity closers, ties, tie channels, masonry support lintels and the like. During this period, we collaborated closely with the client's design team and an external consultant employed by The Curley Group to value engineer the masonry support resulting in a £150,000.00 saving for the client.





CURLEY GROUP



The Curley Group Ltd. Co. Reg. 13143071



Hard & Soft Landscaping

The Curley Group were successful in tendering for the Hard & Soft Landscaping packages at The Exchange.

A brief description of works is as follows; -

- Supply and installation of paving flags tarmac, kerbs, and edgings inclusive of subbase
- Supply and installation of paving flags and fire rated pedestals to roof terraces.
- Installation of decorative flat bar fencing and planters to communal areas

